

## OVERVIEW



## BEFORE GETTING STARTED

### 1. Open the package and check every accessory:



Main Unit with Stylus

Quick Guide (Not Shown)



Battery Pack (2200mAh)



USB Client Cable for Terminal



Power Adapter (5VDC/2.6A)



Ear/Microphone Set



Power Cord

### ! CAUTION:

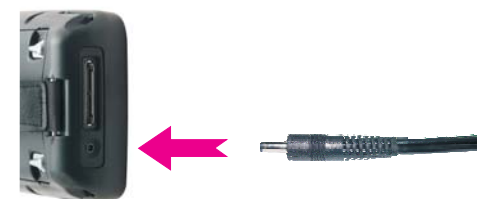
The device will be powered on when you install Battery Pack. Power off device after touch screen calibration and charge batteries for at least 6 hours. Do not turn on the device for the first time until batteries are charged for at least 6 hours. Always charge batteries at 0°C~45°C (32°F~113°F) environment temperature. The Charger LED will be turned to green color when battery charging is finished.

### 2. Installing the Battery Pack

- 1) Detach the Hand Strap.
- 2) Turn the battery cover latches downwards and lift the battery cover away.
- 3) Insert the Battery Pack into the battery compartment with the label facing out, and make sure the battery fits into place.
- 4) Place the battery cover by inserting the top first, and then press the bottom in firmly. Turn the battery cover latches upwards to secure the cover to the PDT.

### 3. Connect Power Adapter to charge the PDT

- 1) Insert DC connector into bottom case of the PDT.
- 2) Connect Power Cord to power adapter.
- 3) Insert power cord to AC Outlet.



## USING THE KEYPAD

The keypad comprises 25 keys (numeric, arrow, functional and Fn) and 3 scan buttons.

- 1) Key "Alpha" toggle between the Numeric and Alpha modes.
- 2) Key "Caps" allows the toggle between upper-case letters and lower-case ones. When enable Caps Lock Mode, the Icon "A" shows at Task bar.
- 3) Press "Fn" to toggle Function Mode.

Special Characters		Special Functions	
Sequence of Keys	Description	Sequence of Keys	Description
Alpha 1	: \	F1	Launch of Application 1
Alpha .	. ;	F2	Launch of Application 2
Alpha [ ]	[ ]	F3	Launch of Application 3
Alpha = %	= %	F4	Launch of Application 4

Special Characters		Special Functions	
Sequence of Keys	Description	Sequence of Keys	Description
Fn 1	@	Fn A	Left
Fn 2	*	Fn V	Right
Fn 3	+	Fn Tab	Esc
Fn 6	-	Fn Caps	Audio Mute
Fn 8	&	Fn 4	Paste
Fn 9	*	Fn 6	Del
Fn 0	/	Fn 7	Copy
		0	Space
		*	Start Menu

## BATTERY PRODUCT SAFETY

Lithium-ion Battery Packs might get hot, explode, ignite and/ or cause serious injury in case of misuse.

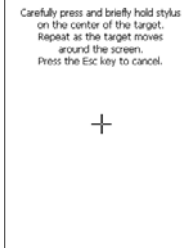
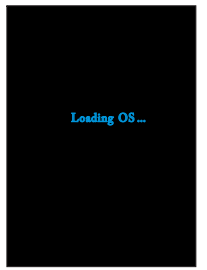
Please follow the safety warnings listed below:

- A. Do not throw the battery into fire. Do not expose the battery to high temperatures.
- B. Do not connect the positive Battery Pack with negative Battery Pack to each other with any metal object (like wire).
- C. Do not carry or store Battery Pack together with metal objects.
- D. Do not pierce the Battery Pack with nails or drills, strike the battery pack with a hammer, step on the Battery Pack or otherwise expose it to strong impacts, shocks or excessive force.
- E. Do not solder directly onto the Battery Pack.
- F. Do not expose Battery Pack to liquid or allow the battery contacts to get wet.
- G. Do not disassemble or modify the Battery Pack. The Battery Pack contains safety and protection measures, which, if damaged, may cause the Battery Pack to generate heat, explode or ignite.
- H. Do not discharge the batteries outside the PDT. Do not use the battery in another device then the PDT or series battery chargers. Otherwise, the Battery Pack can be damaged, the Battery Pack can be damaged or its life expectancy reduced. If the device causes any abnormal current to flow, it may cause the Battery Pack to become hot, explode or ignite and cause serious injury.
- I. In the event the Battery Pack leaks and the fluid gets into one's eye, do not rub the eye. Rinse well with water and immediately seek medical care. If left untreated, the battery fluid could cause damage to the eye.

## SETTING DEVICE

### 1. Initial Boot Up

The initial boot up screen will be displayed when you install battery pack at the first time. Do not remove Battery Pack when system is at initial boot up.



### 2. Calibrating Touch Screen

This calibration is already done by manufacturer. If you want to calibrate the touch screen again, please tap "Start" --- "Settings" --- "Control Panel" --- "Stylus" --- "Calibration" --- "Recalibrate", then hold the stylus and press on the center of each target as it moves around the screen.

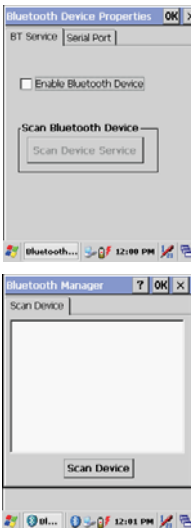
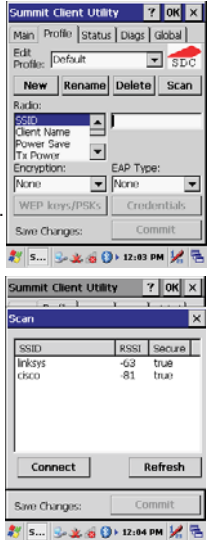
**CAUTION:**

Be sure to use the supplied stylus or plastic-tipped pens for touch screen display. Don't use pencil, pen or any sharp object on touch screen display.

### 3. Setting Up Wireless LAN

- 1) Press "Start" -- "Programs" -- "Summit" -- "scu" to open SCU.
- 2) Into Main tab, tap "Enable/Disable Radio" button to Enable or Disable the WLAN.
- 3) Into Profile tab, tap "Scan" button to connect/refresh the network.
- 4) Select a network, tap the "Connect" button or double tap it to create a new profile SSID.
- 5) And setting encryption of the network then press "Commit" button to commit it.
- 6) Finally, you can view the SSID of the active profile on Main tab and select it to use the network.

**Note:** availability depends of PDT model.



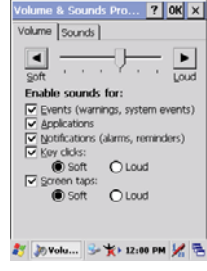
### 4. Bluetooth Device Properties

- 1) Press "Start"---"Settings"---"Control Panel"---"Bluetooth Device Properties" to enable Bluetooth device.
- 2) Wait for 20 seconds in order to initialize the Bluetooth hardware correctly.
- 3) Press Scan device button to search for Bluetooth devices.

**Note :** availability depends of PDT model.

### 5. Brightness Setting

The device is equipped with backlight for both sunlight-readable LCD display and keypad. To adjust the LCD backlight brightness, press the "Fn" key and then press navigation key ">" or "<" to adjust display brightness. Or Press "Start"---"Settings"---"Control Panel" --- "Control Center" "Brightness" to set both LCD and Keypad brightness.



### 6. Volume Adjusting

- 1) Press "Start"---"Settings"---"Control Panel" -- "Volume & Sounds".
- 2) Adjust the volume bar to meet your demand.

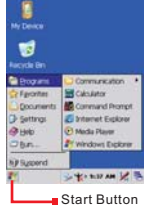
**Note:**

To mute the sound, press the "Fn" key and then press "ESC" key to turn off and on the sound.

## USING THE APPLICATIONS

### 1. Execute an "Application"

Tap an application icon on the desktop, or tap "Start"---"Programs". Select one of the applications.



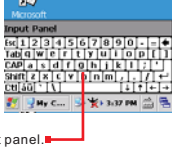
### 2. Close an "Application"

Tap the tab of "X" to close the application.



### 3. Using the Software Input Panel

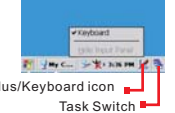
- 1) Tap the "Stylus" icon on the "task bar".
- 2) Tap the "Keyboard" icon.
- 3) When Software Input Panel appears, input characters with the Stylus.



### 4. Task Switch

Win CE can execute multiple applications at the same time.

- 1) Press "Task Switch" icon in the task bar.
- 2) Select the task(s) you want in the task menu. During the execution of applications, when you select the menu "Desktop", brings the selected application to the foreground. It does not close the other applications.



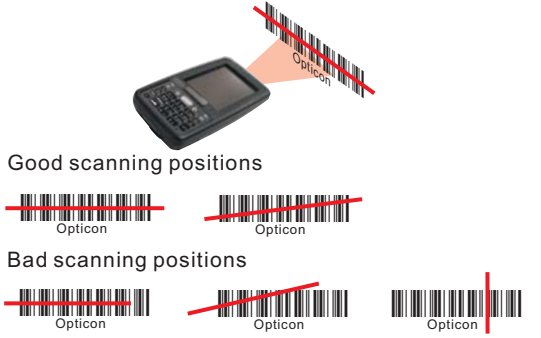
## BAR CODE READING

**CAUTION:**

Remove the protective film from the scan window before use.

1. Start your application
2. Aim the scan window at the bar code
3. Press one of the three bar code reader trigger buttons
4. Aiming :

1D laser: aim the red laser beam on the center of the bar code  
Bar codes can be read from 50 to 650 mm distance.



### 5. Check the bar code reading result

You can verify the result of the bar code reading in your application, by beep sound(s) or the LED indicator.

## USING PERIPHERALS

### 1. Using SD / MMC Type Card

- 1) Remove the battery cover and battery then lift the SD hold.
  - 2) Insert a correctly oriented SD/MMC card.
- Note:** To remove SD/MMC card, press the card again and slot will pop out card automatically.
- 3) Put down the SD hold and re-place the battery and battery cover.

The SD/MMC slot support memory card only. It does not support SD I/O peripherals.



### 2. Put in SIM Card

- 1) Remove the battery cover and battery.
- 2) Pushes the iron stock to front (unlock the slot) and lifts the slot.
- 3) Insert a correctly oriented SIM card.
- 4) Put down the slot and push the iron stock to back (lock the slot).
- 5) Re-place the battery and battery cover.

**Note:** Availability depends of PDT model.



### 3. USB Connection

Connect the USB client cable to synchronize data with a computer.

**CAUTION:**

Be sure the HRS mark on the connector of USB cable to be upward when you insert cable to devices. To remove cable from device, press both buttons on connector and then remove connector from device.

**Note:** Use Microsoft ActiveSync version 3.7 or above.



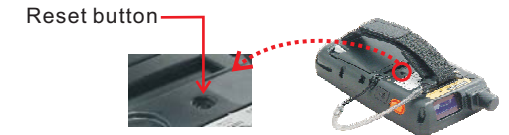
### 4. IrDA Connection

- 1) Generally it's used for synchronized data transmission with a PC.
  - 2) Aim both devices' IR port at each other's.
- Note:** 1. As IrDA is very sensitive to the distance and the angles, approach the two devices' IR ports as close as possible. The maximum transfer distance is 40 cm.  
2. Availability depends of PDT model.

## RESETTING DEVICE

### 1. Warm Reset

- 1) If an application hangs, initiate Warm Reset to terminate the application.
- 2) Warm Reset will close all applications and clear the working RAM, but all files will be preserved.
- 3) Only use stylus to press the Reset buttons.



**CAUTION:**

Try Warm Reset before you initiate Cold Reset. All applications will be closed, and working RAM as well as all files will be cleared if you initiate the Cold Reset. It is strongly recommended to back up your files to Flash ROM, Flash Card or PC.

### 2. Cold Reset

- 1) You can use Cold Reset to initialize the device if the WinCE.NET OS locks up or in case a Warm Reset has no effect.
- 2) To perform Cold Reset, press "Power", and "Reset" buttons simultaneously.
- 3) Device will boot up after Cold Reset.

COMMUNICATION  
MANAGEMENT  
HUMANIZATION



## USER AND PRODUCT SAFETY

- Do not stare into the laser beam directly or shine it into eyes.
- Never use strong pressure onto the screen or subject it to severe impact, as the LCD panel could become cracked and possibly cause personal injury. If the LCD panel is broken, never touch the liquid inside, because the liquid irritates the skin.
- Use only the original approved AC adapter with the PDT. Use of an unapproved AC Adapter could result in electrical problems, or even cause a fire or electrical shock to the user.
- Do not disassemble the PDT. Servicing should be done by Authorized Suppliers only. If the device or accessories gets damaged due to wrong handling or unauthorized repair, warranty is void. In case the warranty seals are broken, warranty is void too.
- Make regularly back-ups of all important data.
- Under no circumstance will Manufacturer be liable for any direct, indirect, consequential or incidental damages arising out of use or inability to use both the hardware and software and/or any data loss, even if Manufacturer has been informed about the possibility of such damages.

Do not throw this product in the home waste bin. For proper end-of-life treatment consult the Environmental care section of [www.sccltd.com.tw](http://www.sccltd.com.tw)

For CE, FCC and other DoC's, consult the Regulatory section of [www.Opticon.com](http://www.Opticon.com)

This device complies With part 15 of the FCC rule Operation is subject to the following two conditions. (1)This device may not cause harmful interference. (2)This device must accept any interference received. Including interference that may cause undesired operation. Complies with 21 CFR 1040.10 and 1040.11 except for deviations pursuant to Laser Notice No. 50, July 26, 2001