

Installing Opticon USB Driver



(home.opto.co.jp)

(www.opticon.com)

Before the Opticon USB device can be used, the USB driver of OPTICON/OPTO ELECTRONICS needs to be installed. If you can not find it in the supplied package, visit the Opticon website section "Service & Support" | "Download Software" and select the product name to download the available driver.

Start:

- Disconnect any Opticon devices that are attached to the PC.
- Open "optousb" program (optousb.exe).



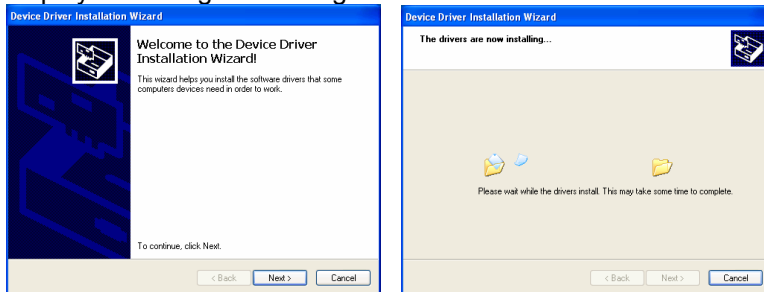
optousb

- Click the [Extract] button. This will run the installation wizard.



Installation wizard:

- Click the [Next] button. Follow the steps. Windows should finally display a message indicating that the installation was successful.

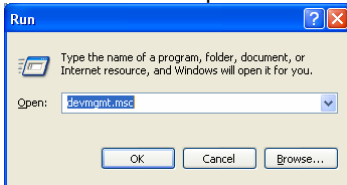


- Click the [Finish] button to complete the installation.



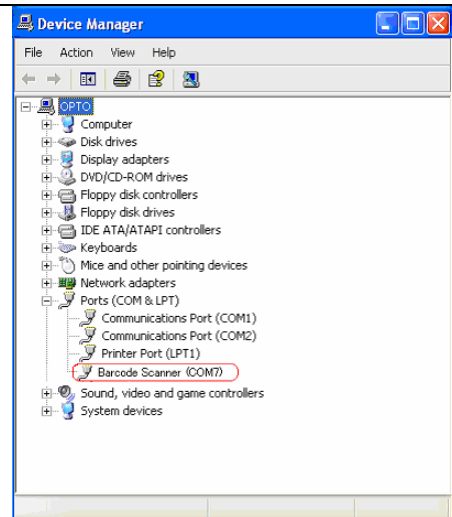
Connecting device/Confirmation of allocated port number:

- Connect the Opticon device to the PC.
- Open the Device Manager utility. Select "Start" menu | Select "Run" dialog box | Type: devmgmt.msc



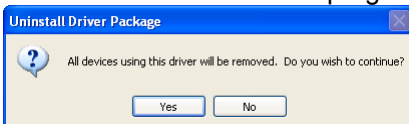
The Device Manager will start up.

The allocated port number is shown in the list "Ports (COM&LPT)" indicated as "Barcode Scanner".



Uninstalling Opticon Device driver:

- Disconnect all the Opticon devices that are attached to the PC.
- Open the Add or Remove Programs utility. Select "Start" menu | "Control Panel" | "Add or Remove Programs"
- Select "Windows Driver Package - OPTO ELECTRONICS CO.,LTD (optousb) Ports" from the list of installed programs.
- Click the "Remove" or "Change" button. This will run the uninstaller program.



- Click "Yes" to run the uninstaller or "No" to exit and cancel the removal.

